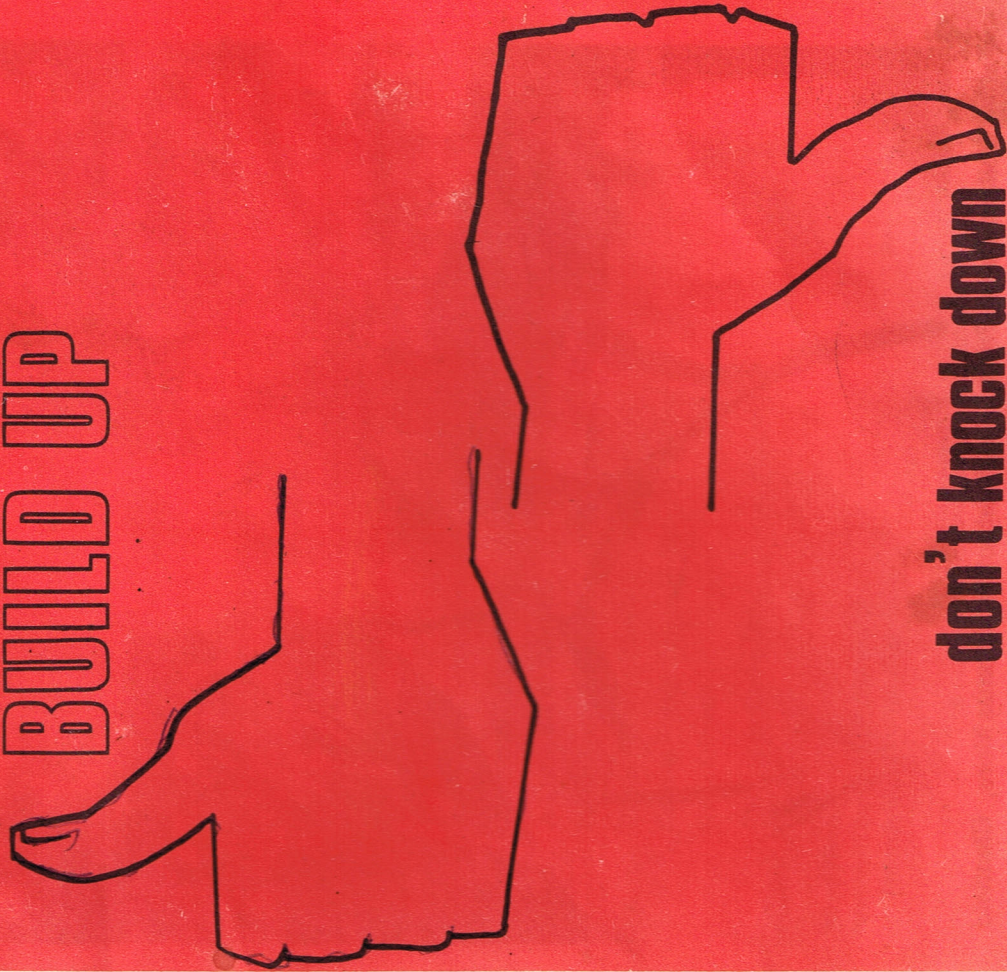


The Parish of St. Thomas

No. 1

# MORE NEWS

**BUILD UP**



**don't knock down**

LIONS FAMILY

# MORE NEWS

Editors/Compilers: Bernard Moran & Roger Lindley  
Postal Address: PO Box 33-761, Takapuna  
Telephone: 444-9344 & 444-7203

## CONTENTS.

From the People . . . to the People	Page 2
Parish Directory	3
Children's Christmas Concert Packs Them In	4
The Parish Church — To Be or Not To Be?	6
Taking a Smile to Others	7
What — Where — Why & When	8
The First Mission for the Parish	10
Changes in Catholic Education	12
God's Way	12
A Little Bit of Glenfield in the Solomons	13
Parishioners Show Support	14
Dance Fever In Parish	15
Cutting Things Down To Size	16
Work Offered	16
Getting to Know Others — And Yourself!	18

'More News'  
Published by the Parishioners of  
St. Thomas More Parish, Glenfield.

Printed by CPC, Auckland.

The publication is financed by the generosity of  
Parishioners. The Editors welcome any contributions.



Father Bolland Parish Priest, The Parish of St. Thomas More, Glenfield.

# From The People . . . ... To The People

Welcome to this first edition of 'MORE NEWS' — a magazine written and prepared by the parishioners of Glenfield for the parishioners of Glenfield. It is funded completely by the generosity of parishioners completely separate from the Parish and Priest's giving. It is your magazine and we hope you will find it of interest and will make your own contributions towards it. Not only your financial contributions but your written contributions of ideas, comments, and concern for the Parish of St. Thomas More. As the parish magazine, its aim is to keep you in touch with what is going on in the community; and through the 'letters to the editor' page and other pages, act as a forum for you to sound off, proffer advice, do a moan, etc. etc.

In future editions 'More News' plans to run stories about our patron saint — St. Thomas More. In many ways he seems an inspired choice as a patron saint for this sort of parish. He was the perfect example of the committed Catholic layman — a worldly man with a deep understanding that life is merely a preparation for the eternal life with God. A devoted family man, St. Thomas More had a strong sense of humour. He even cracked a joke to the executioner moments before his beheading on the scaffold.

## TO OUR UNKNOWN PARISHIONERS.

Now a special word for those who, for one reason or another, don't come along to share mass with us on Sunday. It is a fact that only the minority of the Catholics registered in the parish actually attend mass. We know that there are many people who are struggling on alone, trying to carry their burdens by themselves: solo mothers and fathers, broken homes, alcoholism in the family, unwanted pregnancies, divorced Catholics, aged and lonely and those who cannot come to terms with their faith and the many changes which have occurred over the years in the practising of our faith or simply have lost touch with their faith.

You may not have entered a Catholic church since you left school; no matter . . . this parish is the one for you. The parish of St. Thomas More may appear to be pretty Mickey Mouse at times, but our Lord in His wisdom works out His divine plan through ordinary human beings like you and like me. It's crazy, we know, but that's the way He works.

You only have to look at the twelve apostles personally chosen by Christ. They often drove Him to exasperation, and their fellow Jews couldn't take them seriously . . . "Surely if this is the Christ, the Messiah, he wouldn't surround himself with such nonentities as these men."

## YOUR ROLE IN THE PARISH

This parish is too big for one priest to run effectively. Father Bolland has to cover Glenfield, Greenhithe, Albany and Paremoremo. Until such time as the parish receives additional assistance or Father masters the art of astral projection we will all have to share in the responsibility of making the parish a caring Christian community. God helps those who help themselves.

The following pages will introduce you to various groups within the parish who you can turn to for support or who you can lend your support to. Read the magazine. I know you will find it interesting because it is written by the people around you. It is not just another way of pushing religion at you. This is a 'news' magazine.

And if you have any comment to make, suggestions or would like to submit a contribution, or advertise in these pages ring either Bernard Moran at 444-9344 or Roger Lindley at 444-7203 or write to 'More News', P.O. Box 33-761, Takapuna.

Bernard Moran & Roger Lindley.

## PARISH DIRECTORY

Parish Priest: Father Bruce Bolland

Presbytery: 336 Wairau Road, Glenfield  
Tel: 444-8624

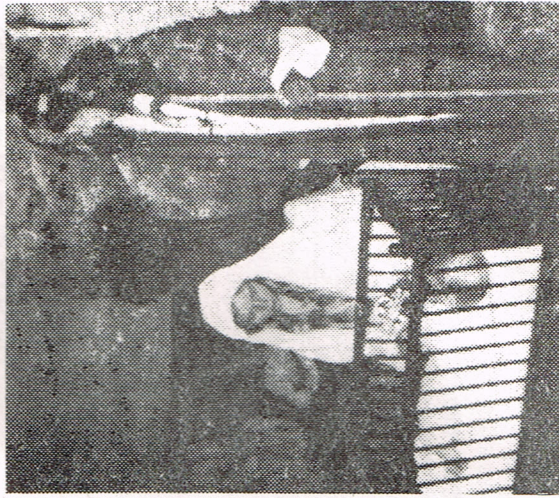
Mass Times: Sundays 7.30a.m. ) Glenfield Intermediate School  
10.30a.m. ) Chivalry Road, Glenfield  
9.00a.m. Albany or Paremoremo  
Enquire Presbytery  
Monday 7.00a.m. St. Vincent de Paul House  
334 Wairau Road, Glenfield  
Tuesday 9.30a.m. The Chapel (basement of  
to The Presbytery, 334 Wairau Rd,  
Saturday Glenfield.

Reconciliation: Act of Penance every Saturday 10.00a.m. to 11.30a.m.  
or by appointment.

**TIMES (PARTICULARLY WEEKDAY) ARE SUBJECT TO CHANGE  
DURING HOLIDAY PERIODS  
IF IN DOUBT TELEPHONE 444-8624**

The Daughters of Charity St. Vincent de Paul House  
334 Wairau Road, Glenfield  
Tel: 444-8857

# Children's Christmas Concert Packs Them In.



Those who took part were:

Play Director — Susan Steele,

Mary — Joy Anne Gooding  
Joseph — Mark Wright  
Inn-Keeper — Nicholas Langford  
Drummer boy — Josephine Todd  
Maori children — Richard and  
Florence Law  
Baby Jesus — David Roberts  
Narrators — Michael Edmonds,  
Patricia Read  
Curtain — Suzanne Flaherty  
King Herod — Catherine Langford  
Chief Priest — Vicki Wright  
Tiny Shepherd — David Redmore  
Shepherds — David Ridge, Kevin  
Hay, Russ Flatt, Peter Skinner,  
Mark Lindley, Greg Todd,  
Andrew Bryan, Michael  
Baker, Matthew Langford,  
Nicholas Langford

Soldier — Michael Baker  
Kings — Kathleen Todd, Denise  
Cuneen, Louis Bandcroft  
Kings' Attendants — Celeste  
Baker, Catherine Kennedy,  
Hilary Bandcroft  
Angels — Sherrilyn Edmonds,  
Joanne Baker, Michelle  
Ridge, Frances Woodward,  
Samantha Lindley, Rachael  
Rhodes, Vanessa Bland,  
Tracy Geritzlehner,  
Stephanie Ridge, Karen  
Hay, Helen Bryan, Suzanne  
Skinner, Janet Geritzlehner,  
Karen Sullivan, Sally Steele,  
Vanessa Anderson, Louise  
Longbottom,  
Arch-Angels — Tara Moran,  
Megan O'Ryan.

It was a full house and standing room only at Glenfield Primary School Hall when the children of the parish took part in the Christmas play. The Hall was packed with proud parents and wellwishers for the play which told the story of Christmas. How in the reign of Tiberias, Mary and Joseph came up to Bethlehem for the Roman census, and in a manger Mary gave birth to a baby boy — Jesus. The Word became flesh in the presence of lowly people — the shepherds and humble men — the three wise men from the East.

David Redmore, the smallest shepherd, made his acting debut at the age of two and nearly stole the show with a virtuoso display of stage presence.

Gerard Peters, who has sung professionally most of his life in Britain, sang in his rich baritone the 'Ave Maria' to a hushed hall.

Susan Steele the Play Director provided the strong vocal backing to the massed choir of little angels, dressed in their long white robes and big white feather wings. One lady had spent many hours painstakingly making twenty six such wings.

The play was the culmination of many weeks practice. A lovely bouquet of flowers was presented to Sister Barbara for sterling work in organising the play and rehearsing the children. Sincere thanks was also expressed for the many people in the parish who contributed by making costumes, providing musical accompaniment, painting scenery, etc. And every child in the Play received a token of appreciation of their own.



Sister Barbara



Sister Gabriel

# THE PARISH CHURCH TO BE OR NOT TO BE?

At the Confirmation Mass in November of last year, Bishop Gaines made mention of our plans and aspirations for a Parish Church. The Bishop's blunt style did not go down too well particularly as the planned giving campaign had raised a lot of hopes around the parish.

Unfortunately too many people didn't listen to the full text of what the Bishop had to say. Basically here is what he did say:

- i. The Auckland Diocese is up to its neck in debt to the tune of \$14,000,000 (although no mention was made of assets!)
- ii. We shouldn't expect a church yet because the Diocese doesn't have the money to lend.

He did not say we **will not** have a church, and he did not say we **could not** have a church. All that he said was that the Diocese could't afford to build a church for us. In other words, if we want a church, a hall, or whatever WE not the DIOCESE have to build it.

And we can. At the end of the planned giving campaign the parish had promised to provide \$480 a week. In actual fact, contributions amount to only \$380 per week (!). Parishioners have been reminded that the money for building purposes comes out of the Diocese Development Fund. If the Fund doesn't receive any support from Glenfield then Glenfield cannot expect to be given priority over those parishes which do support the fund. Fortunately, Glenfield does lend its support to the Fund particularly in recent times. Such as this grown that the Chancellor (he holds the purse strings) telephoned Father Bolland his congratulations and advised the parish that the Diocesan architect would be drawing up the Development Plan for the parish. This should now be under way.

Once this basic plan has been drawn up the parish will be able to appoint its own architect to prepare plans for whatever buildings it wants to erect. (The site plan is to identify individual areas and allocate them for specific purposes — church, hall, school, etc).

The parish building fund already holds approximately \$20,000 and we have the assurance of the Diocese that once we start building the rates the parish has paid on the land in Powrie Street will be credited to the parish. So, in fact our building fund is already of fairly significant proportions.

Meanwhile we can all help in our own little way to speed up the building process. If there is any savings money laying around why not invest it in the Diocesan Development Fund, your investment is safe and money is available on call.

You can also assist the parish by supporting various activities particularly those which assist in developing the parish or are raising funds for building purposes.

You may have some ideas on how we can raise money. Remember, a parish is made up of 'thinkers' and 'doers'. If you do not have it in you to join in the parish as a 'doer' we always welcome 'thinkers'. Give the 'doers' one good idea from a 'thinker' and who knows we could have our church that little bit quicker.

## Taking A Smile To Others.

Ten ladies in the parish have formed a 'Visiting Group' which meets fortnightly to visit the sick and elderly at such places as the Bentley Court Flats, Shalom Rest Home as well as at private homes throughout the parish. The happiness which these ten ladies take with them on their visits is evident by the many comments one hears. Apart from visiting, the group also arranges other activities for the sick and elderly: the first Tuesday of each month is set aside for a Mass at the Presbytery for the

senior parishioners; twice a year there is a Mass of the Anointing for the elderly and sick; and a social is held three times a year.

It is all too easy to overlook, even forget, those in our Community less fortunate than ourselves and one has to admire the work which these ten gallant ladies do. If you are at all interested in the work they do and would like more information or just to express your appreciation give Anna Bates (tel: 444-6785) or Elma Taylor (tel: 444-8424) a call.

# WHAT

# WHERE

# WHEN & WHY

## GIVING YOUR BABY THE RIGHT START IN LIFE

Expecting a baby soon? Have you thought about having the Baby baptised? Couples can now get together in the Baptism Group to learn, through three sessions, all about what you are committing yourself and your baby too. It is a time of great joy, especially the preparation for the actual ceremony. The Sisters will make baby a baptismal robe and a baptismal candle which the baby keeps to light on its birthday . . . each year. Giving your baby the right start in life is so important. So if you are expecting a baby soon contact the Daughters of Charity, 334 Wairau Road. Telephone 444-8857.



Sister Margaret

## A GOOD TIME IS HAD BY ALL

The Pre-Schoolers Group

'Organised chaos' would be a good way of describing the activities of the Pre-Schoolers group. The young children have a great time racing around, playing and making new friends. Even more so when pets are brought along or there is a lamb to be fed from the bottle. The idea is that the children have a happy time learning that God is their Father who loves them, and Jesus is their friend. The long term aim is the formation of the mature Christian.

Sister Margaret runs the pre-schooler group every fortnight from 10.30a.m. to midday at the Daughters of Charity Home, 334 Wairau Road, and mothers come from all over the parish. Some are solo-mothers and the group provides a good opportunity to get involved in a Christian community and to make new friends.

If you don't believe that learning can be fun come along and participate in a little 'organised chaos.' For more information telephone Sister Margaret on 444-8857. (Don't worry about transport — if you have any problems someone will be only too pleased to help).

## WHATEVER HAPPENED TO THE CHOIR

The Choir certainly looks somewhat depleted at present but do you think it can find people prepared to stand up and sing? Even after repeated notices in the weekly newsletter the same few 'stayers' plod on.

If you enjoyed the midnight mass then you know what can be achieved with a little effort. The Choir desperately needs support from more

members of the parish — both men and women but particularly men. It's only got one regular male supporter! So you can't sing. Who says so? And even if you can't you won't be asked to do any solo numbers just to lend your support to the total effort.

Meetings are every other Tuesday under the guidance of Sister Barbara and I know she would love to have you telephone her to offer your support. The number to ring — 444-8857.

## WHATEVER HAPPENED TO THE SOCIAL COMMITTEE

Early last year the Social Committee was in full swing following the very successful Pot Pourri. But like too many good things in this Parish the steam was soon taken out of their enthusiasm by apathy and dissension within the parish. First the community started to wane in its support for Parish activities, then other groups thought they would organise something themselves rather than combine with the Social Committee. And the parish successfully proved the saying 'United We Stand . . . Divided We Fall' and the activities of the social

committee went into hibernation. But hibernation is a temporary phase and with the encouragement and support of the parish I am confident that you again can look forward to social activities within the parish — i.e. coach outings (two successful ones last year), sausage sizzles, another musical pot pourri, dances and cabaret evenings, etc. What ideas have you got and what help can you offer? You can't have a successful committee without people to help organise things. Why not offer your assistance. Telephone Roger Lindley, 444-7203 or Gerry Lambert, 444-7034.

# THE FIRST MISSION FOR THE PARISH OF ST. THOMAS MORE.

A Mission is usually a wonderful opportunity for a Parish to be re-united as a community. It is not surprising therefore that many parishioners are looking forward to this parish's first mission.

Father Bolland wrote away in November to the Vincentian Fathers in New South Wales asking if they would like to send a mission team to Glenfield during March.

He told them the history of the parish, how in the last ten years the population has grown from 2000 to approximately 30,000; that the Catholic community is estimated to be around 3500 out of which 370 attend Sunday Mass in a local school assembly hall with about another 300 going to Takapuna or Northcote.

The Vincentians replied saying that St. Thomas More parish sounds very interesting. They are pleased to send a three man team over to be in Glenfield from the first Sunday of Lent (February 24th) right through till Easter Sunday (April 6th).

Their offer is extremely generous. The Australians are paying their own air fares and have told Father Bolland that they don't want the Parish to pay any stipend to the Order for the Mission. The Parish will have to find suitable accommodation — rental house preferably — part-time household assistant and a car for visiting people.

As for the actual Mission itself. Let us quote from their letter to Father Bolland:

*"... Our method of mission is to go into a parish to work with the Priest, the parish council and other co-ordinators. We try to make the principal groups in the parish more aware of their vocation to be Christ as Teacher, Priest and Shepherd to the people of the area. To do this we work with as many small groups as possible. We would like to do a four session series on 'We the Parish' with the Parish leaders; a week-end (live-in if at all possible) with the parish council; an intensive, but simple course for the caring or welfare group; help to the Catechists in their important work; perhaps something for the youth and so on.*

*The aim is to strengthen community, not for its own sake, but to make it more effective in bringing Christ to the world.*

*We hope not to be overpowering — we like to think we take people as we find them and bring them a little further in living out their vocation. We visit the non-committed in their homes, but feel that the truly effective work in this area comes from a more prolonged effort on the part of the parish itself...."*

Let us all take a look at our lives and look forward to this forthcoming Mission and a re-awakening of the Christian spirit within the community.

# CHANGES in CATHOLIC EDUCATION

## The Family Living Programme

The last few months have seen major changes introduced to religious instructions in Glenfield parish. Sixty seven families have and continue to participate in a 'Family Living Programme' — a means of religious education which involves children and their parents. Here is how it works.

The parish was divided into four neighbourhood groups. Parents who had children attending CCD classes were invited to meet together and study the Adult section of the Family Living Programme which is published monthly in the Zealandia. Together they considered the work to be done over the next three week period with their children in their own home. On the fourth week all the children attend classes at the Presbytery with a Religious teacher. The same theme discussed by the parents is carried through in the children's material both at home and in the group class. The following month the whole process begins again with a new theme.

At present seven young people have offered their services as childminders thereby allowing parents with very young children to attend the meetings.

Bishop Mackey sees the Adult meetings as being the mainstay in the programme, as the parents are the natural religious instructors of their children. This was strongly emphasized by Vatican II. The Church's job is to support the parents in this and to make it all happen.

First Communion Groups continue under a separate scheme with the parents meeting at different times. Earlier last year some of the work done by the children in the Programme was displayed at the library in Bentley Avenue.

The Religious Education Centre is issuing a 'new look' Family Living Programme for 1980. So if you believe in the old adage that 'the Family that prays together — stays together' and you would like to find out more about the Family Living Programme contact Sister Barbara on 444-8857.

## God's Way.

God's ways are not man's ways. He used nonentities to build His church. It is the same story in Glenfield going into the 1980's as it was in Palestine after the Resurrection. We may not be the best qualified to build a community in Glenfield but all we have is ourselves and the Holy Spirit — what more do we need?

# A LITTLE BIT OF GLENFIELD IN THE SOLOMONS!

The Catholic Womens League in Glenfield is not a large group, it only has eleven financial members and yet over the years they have had numerous fund raising activities to provide some relief for our missionary sisters in the Solomon Islands. The Group has also raised funds to donate to the Hurricane Relief Fund in the Fiji Islands, to assist with Missionary priest's airfares, plus other worthy causes such as Pregnancy Help.

The small band of helpers is united with 7000 members throughout New Zealand. The group meets monthly with a guest speaker, a mass, spiritual readings and/or prayers. Fr. Bolland is the spiritual leader. Each branch assists a Parish or group in the Pacific. Glenfield CWL support Father McSweeney and a native order of Sisters — Daughters of Mary Immaculate — in the Solomon Islands.

Regular fund raising activities include Trading Tables, Stalls, Serving Supper at parish socials AND DOING THE DISHES! The Group is always on hand to help the parish activities — First Communions, Confirmations, Socials, etc. The Group is also represented on the Parish Committee.

Apart from donations of over \$350 the group has sent parcels of clothing, sheets, towels, soap, sewing needs, medals and bibles to the Solomons. Their thanks go out to all those who have contributed.

The motto of the League is "Faith and Service". Our Lord calls all those who believe in Him to serve Him. The CWL group recognises the strong support of its members but realises that to sustain its activities it needs many more members.

If you are familiar with the Leagues activities in the past you may not realise the many changes, for the better, which have taken place. Today the League is much broader in its outlook and offers the opportunity of gaining an understanding of the Catholic viewpoint on many issues both controversial and topical.

The Catholic Womens League would welcome your support. For further information and date of next meeting contact **Elizabeth Auger** (tel: 444-5352).



# PARISHIONERS SHOW SUPPORT

'Not OUR will be done Lord — but YOUR will' . . . I mean, what's the use of running about like a flock of headless chooks trying to do this and that in Glenfield parish if God want's us to do something completely different. After all, He created us and has a plan for this parish like everything else. 'God . . .' as they say: . . . 'is always subtle, but never malicious.'

The parish day of prayer was an attempt to say to God: "Alright, here we are before you Lord, in love and trust. We are asking you to bless this parish in the way You know best. We pray that YOUR will be done." So it was in Glenfield on Saturday 20th November 1979 that this parish gathered as a family for a 24 hour prayer vigil TO ASK God's blessing on our endeavours to build a truly Christian community.

The Chapel at the Presbytery was transformed to create a place of reverence and holiness. It was full to overflowing during the Family Hour from 2.00—3.00p.m. on Saturday. And during most of the 24 hours of the vigil there was never less than 6 people in the chapel. One woman even stayed for the whole time to pray.

On Sunday morning Lauds, the official morning prayer of the Church, was recited. Lauds is Christ's prayer and is held by the Church to have the same mana as if Christ Himself was asking His Father to bless Glenfield.

*"With Him — In Him — Through Him, all honour and glory is Yours, Almighty Father — for ever and ever. Amen."*

God always answers prayers but usually not in the exact way we would like at the time. And we all know that we will have the parish and the community we long for but not in OUR time rather in GOD'S time.

And one thing we now know as a community is that a great many of us are prepared to do what little we can to help create a truly caring and Christian community here in Glenfield.

# Dance Fever In Parish.

The Glenfield youth group came up trumps when they organized a Family Disco at Glenfield Hall.

Their hearts were in their mouths on the day because ticket sales did not look too good and it was pouring with rain. But, by eight thirty the Hall was crowded with all ages and they danced and boogied till midnight. Everyone could come along — babies, toddlers, teenagers, mums, dads, grandparents and friends . . . no problems finding babysitters.

The Youth Group meet regularly for informal get-togethers, occasionally combining with the Beachhaven Youth Group in social activities. Once a month the two Groups have discussions about their faith and life in the modern world.

A lot of teenagers shy away from the youth group under the mistaken impression that they will be associating with a lot of 'Bible-Bashers and Goodie Goodies.'

The Glenfield Youth Group is a down-to-earth crowd and they are the future Church. Any teenager who is at a loose end sometime is welcome to join in the Group's activities. There's no obligation, no membership fee. Denis Lyons, (tel: 444-6508) is the Group Leader so if you have any questions, reservations or want to know when the next meeting is, give him a ring.



# Cutting Things Down To Size

## AREA GROUPS

A quick look at a local map will soon show you how sprawling Glenfield Parish really is. It is quite obviously too large geographically to cater for all the needs of its members and non-members. To overcome the many problems which the areas create it has been divided in to twenty three areas to help create and foster the growth of a caring Christian community on a more manageable neighbourhood basis.

What this means, in effect, is that parishioners who volunteer to make the area scheme work help the parish priest, the sisters and other members of the parish by: advising Fr. Bolland of new arrivals in the parish; being able to visit people and provide them with information and advice about parish activities and help organise help as necessary such as transport to mass, pre-school education, etc.

Each area group is also encouraged to set up other activities as they see necessary in each area. This may be prayer groups and scripture groups, or help for the aged, sick, lonely and needy. It can even lead to organising childcare, handymen, lawns, gardens and other maintenance work as may be necessary.

Each area group will develop differently because each area will have different requirements.

# WORK OFFERED

Are you a plumber, a handyman, a welder, an electrician, a builder or anything else? Then why not advertise your services to the people of Glenfield. This space will cost you only \$10.00 per issue. Smaller spaces cost less, larger spaces cost more. Ring Bernard Moran or Roger Lindley and strike a bargain advertising rate — if you're a good business man you may get the best advertising rates on the North Shore.

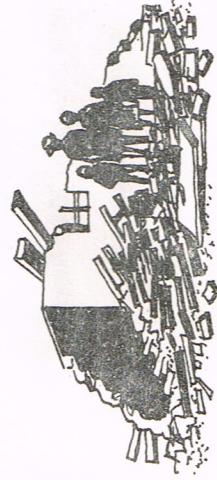
Many parishioners have already offered their assistance to this particular activity. Here are the area contacts so far arranged. More will be established as the people come forward. For further information either contact your area leader or ring Jim or Phyllis Neale at 444-8576.

### AREA CONTACTS

1. Manuka  
Sheila Baker (444-5320) Sue Rudling (444-6630)
2. Bayview  
Gerry & Judy Lambert (444-7034)
3. Eastern Park  
Anne Flatt (444-2877)
4. James  
Terry Donovan (444-7978)  
Jo Taylor (444-7711)
5. Girrawheen  
Erin Hobbs (444-9450)
6. Sunnynook  
Clare Russell (444-8843)
7. Wairau  
Brian & Carol Latimer (444-5614)
8. Weldene  
Margaret Tindall (444-9892)
9. Diana
10. Bruce  
Jenny Stannard (444-3196)
11. Velma  
Alan & Raye Holloway (444-8284)
12. Chartwell  
Marie McNaughton (413-9636) Moya Hocquard (413-9800)
13. Marlborough  
Ann Brown (415-9022)
14. Agincourt
15. High Road
16. Valley View
17. Stane
18. Stanley  
Kaipatiki
19. Glenfield
20. Greenhithe
21. Albany
22. Paremoremo
23. Coatsville

You are also invited to contact these people to ask any questions you may have on the Parish and your place in it. Complete confidence is assured if you request it. So if you've got a question or are in need of help but are too shy to ask ring your area leader.

A doctor visited family after family in the wake of the 1976 Guatemala earthquake. She asked each, "What did you lose?" Though most families had lost everything they owned, if no one had been killed, each family replied, "Nothing."



# Getting to Know Others ~ ~ And Yourself! THE MOTHERS GROUP

How well do you know yourself? Probably not as well as you imagine. At least that is the experience of a group of Mothers who meet every other Thursday at the Daughters of Charity Home. At present the group only numbers about six but others are always welcome. At the meetings discussions take place in a very informal atmosphere on the role of the Church today and our attitudes and feelings about it.

The group, under the guidance of Sister Margaret also participate in a course on renewal of faith. This usually leaves the group with something to ponder about between meetings. It is also an opportunity to analyse one's own position on the point in question.

Those who attend these meetings find them not only enjoyable but also a wonderful opportunity to share knowledge, views and personal experiences. The members of the group have learnt more about their faith, each other and what we think is most important, themselves, because too few of us really know ourselves.

This is the type of group which a great many mothers will really enjoy if they will only go along to any of the meetings. So now you want to know when the next meeting is — then telephone Sister Margaret on 444-8857. You never know, there may be another side to you which you never knew about!

---

## BUY, SWAP OR SELL

Is there something you want to buy, to swap or sell? If so there's someone in the Parish who is looking for you. Why not advertise in this, your own magazine.

Either write your requirements or telephone it through to 'More News' P.O. Box 33-761, Takapuna. Tel: 444-7203.

What's it cost? It costs as much (or as little) as you think its worth. (Make cheques payable to 'More News')